

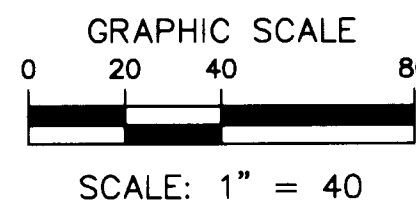
PENNOCK PRESERVE PUD, PHASES 2 & 3

BEING A REPLAT OF "THE OLD PLANTATION PUD", RECORDED IN PLAT BOOK 16 AT PAGE 58, PUBLIC RECORDS OF MARTIN COUNTY, FLORIDA, TOGETHER WITH OTHER LANDS, ALL LYING IN SECTION 28, TOWNSHIP 40 SOUTH, RANGE 42 EAST MARTIN COUNTY, FLORIDA

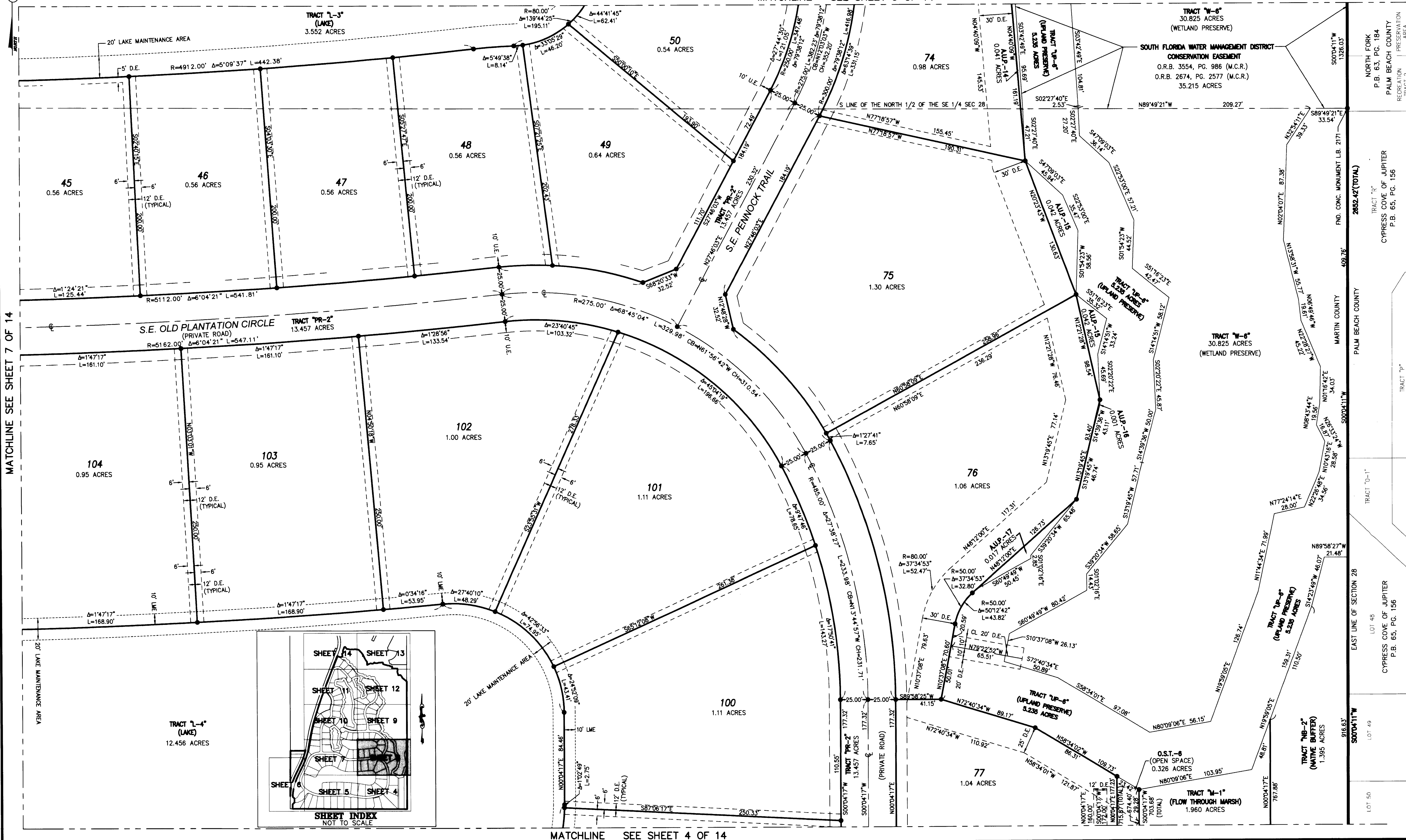
SHEET 8 OF 14

MATCHLINE SEE SHEET 9 OF 14

NOTES
COORDINATES, BEARINGS AND DISTANCES
 COORDINATES SHOWN ARE GRID
 DATUM = NAD 83 (90/98 ADJUSTMENT)
 ZONE = FLORIDA EAST
 LINEAR UNIT = US SURVEY FEET
 COORDINATE SYSTEM 1983 STATE PLANE
 TRANSVERSE MERCATOR PROJECTION
 ALL DISTANCES ARE GROUND UNLESS NOTED OTHERWISE
 SCALE FACTOR = 1.0000307
 GROUND DISTANCE X SCALE FACTOR = GRID DISTANCE
 BEARINGS AS SHOWN HEREON ARE GRID DATUM,
 NAD 83 (90/98 ADJUSTMENT), FLORIDA EAST ZONE.



THIS INSTRUMENT PREPARED BY
 DAVID P. LINDLEY
 OF
CAULFIELD and WHEELER, INC.
 SURVEYORS - ENGINEERS - PLANNERS
 7900 GLADES ROAD, SUITE 100
 BOCA RATON, FLORIDA 33434 - (561)392-1991
 CERTIFICATE OF AUTHORIZATION NO. LB3591



MATCHLINE SEE SHEET 7 OF 14

MATCHLINE SEE SHEET 4 OF 14

